



LONG COVID LIVES

Chapter 2 of 3

Long Covid Lives

Chapter 2 of 3: Looping impacts

These are stories of what it is like to be a young person living with Long Covid, created in collaboration with those who have experienced it.

They are based on 72 young people's accounts generated through interviews with researchers. No individual characters represent one story – we have brought different people's stories together to represent multiple experiences.

Previously...



Santi: Santi (he/him) struggled to get support for Long Covid in the NHS. With financial and emotional support from his parents he finally managed to get a diagnosis and advice on 'pacing' from private healthcare. **This time** we see how Santi's experience of Long Covid also interacts with anxiety, disordered eating, and experiences of racism, as he goes back to uni on a reduced timetable. He is seen as "too complex" for NHS care.



Rowan: Rowan (they/them) also experienced ongoing health impacts from Covid-19 but struggled to get a GP appointment. They ended up prioritising accessing gender affirming care with the one appointment they managed to get with the GP. **This time**, Rowan is still trying to work out what is happening to them and joins an online support group to get some advice.

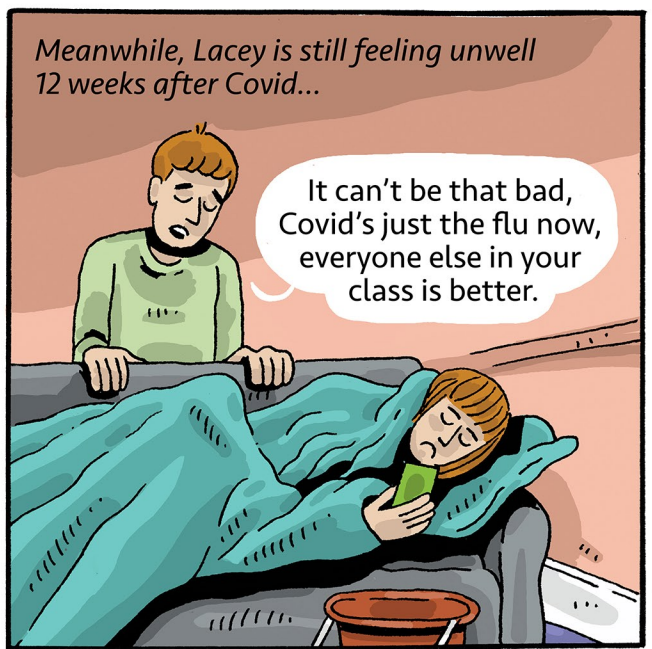
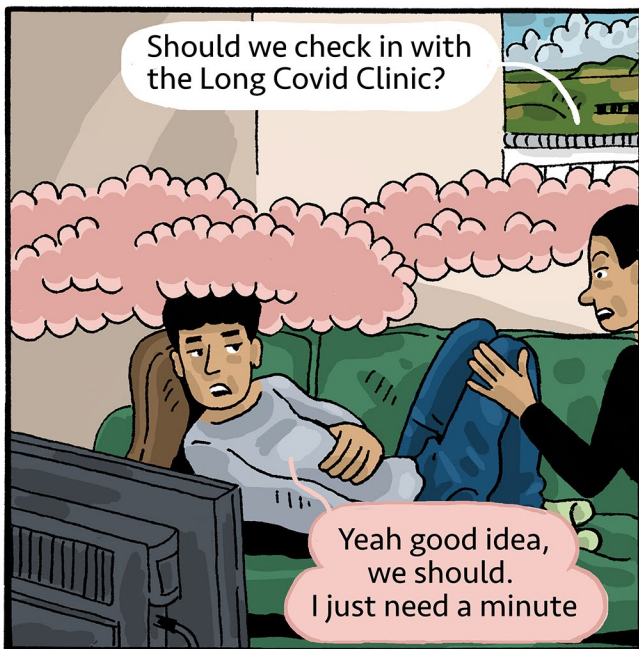
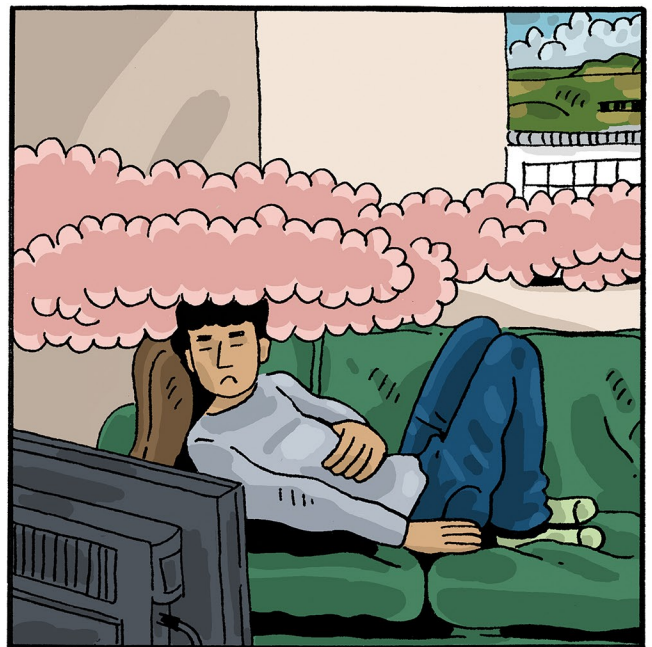


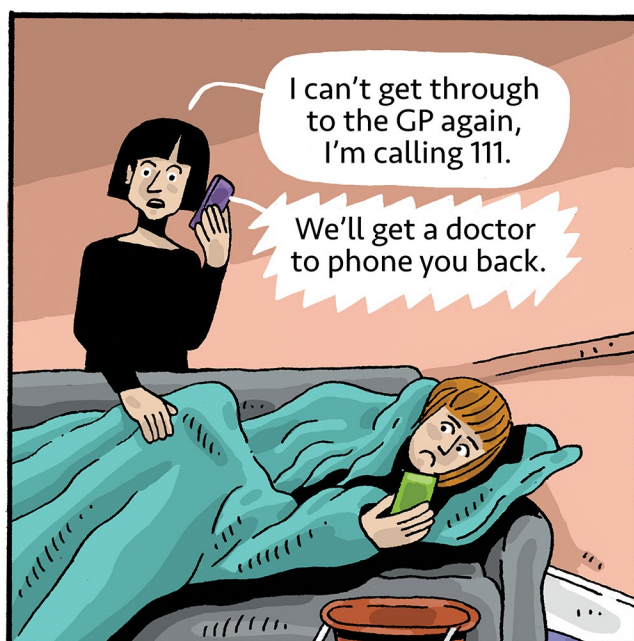
Elena: Elena (she/her) struggled to access any support for her experience of Long Covid, and her single mum couldn't afford to take her to private care. **This time**, Elena joins an online group of young people with Long Covid to gain some peer support.

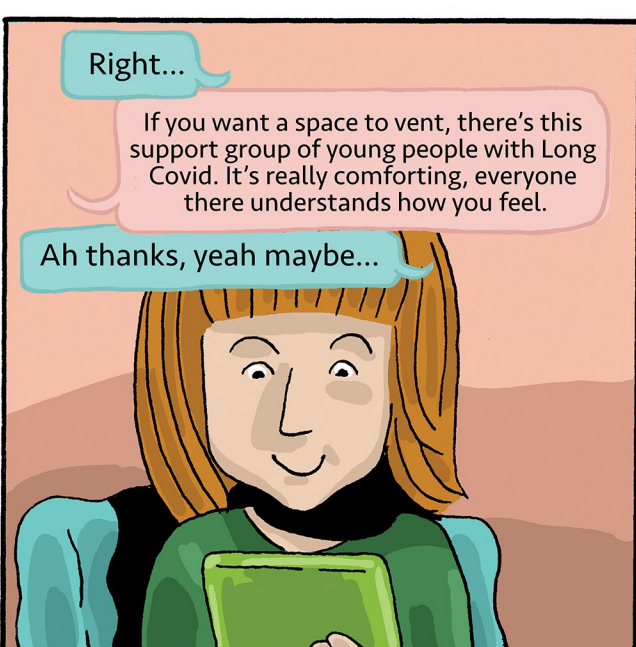
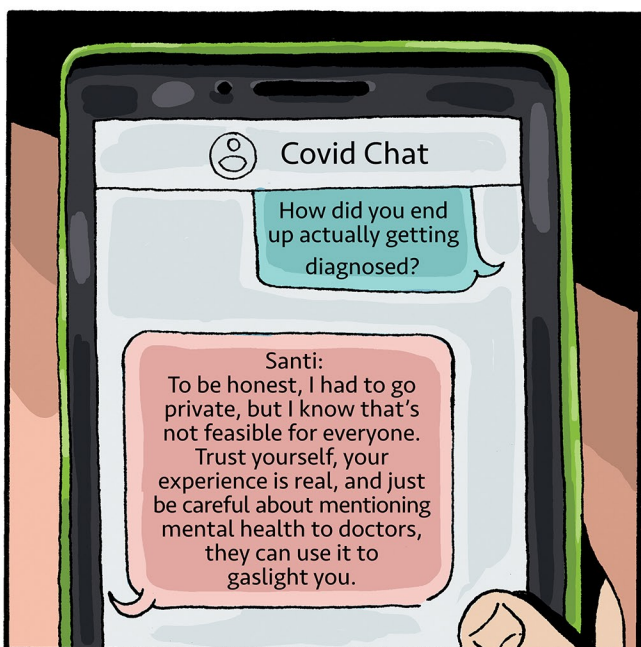
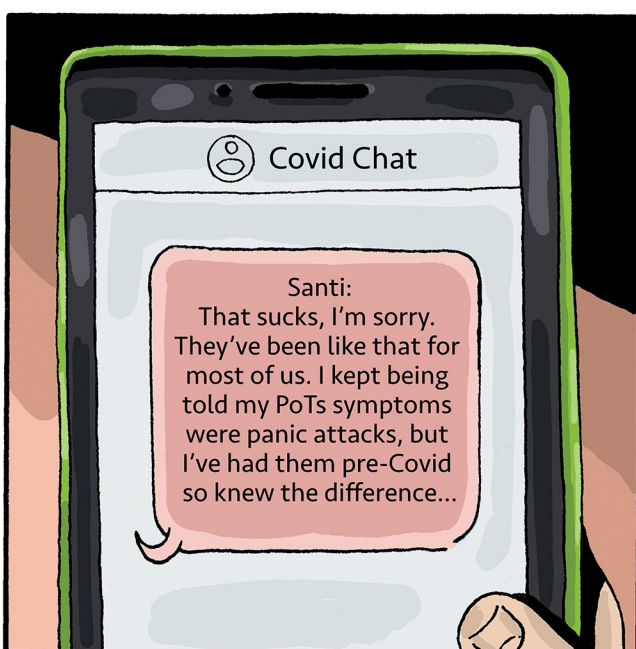


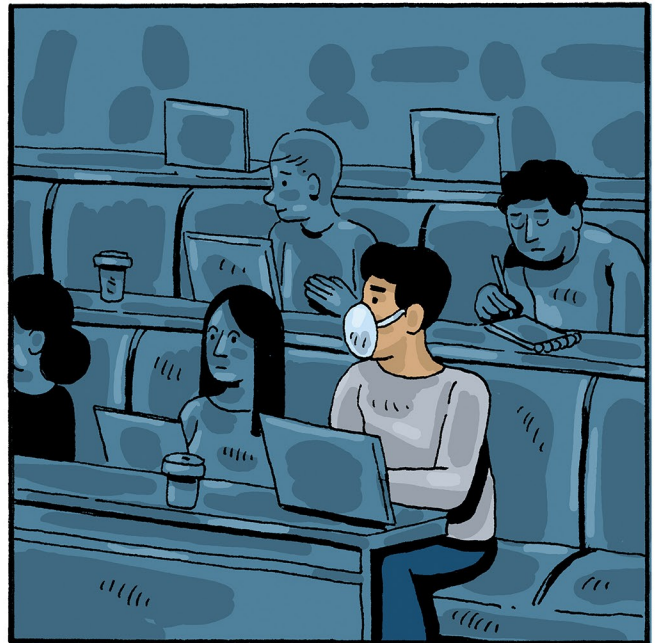
Lacey: **This time** we are also introduced to Lacey (she/her) who is a 17-year-old British European student who has taken time out of A-Levels because of long term symptoms from Covid-19, including chronic fatigue, allergies, and stomach issues which cause sickness. She feels gaslighted because the doctors say it's anxiety and depression. She wasn't feeling any of these things before she had Long Covid, but over time the isolation starts to impact her mental health.

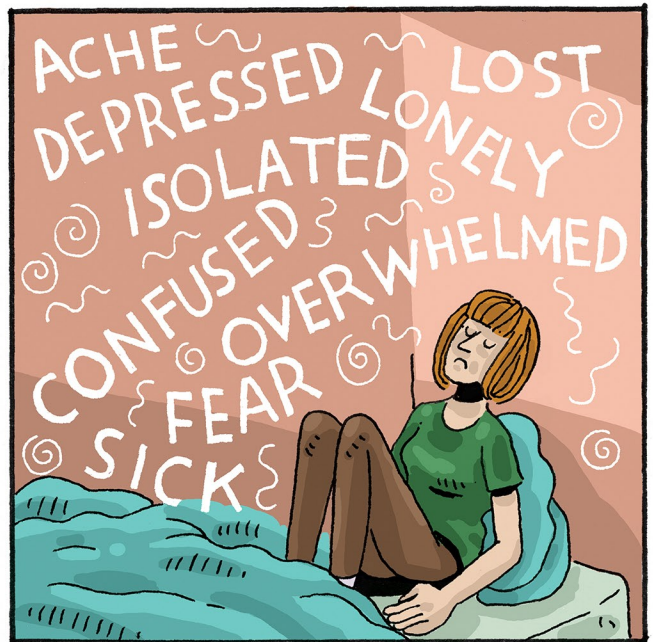
Content warning: *This chapter contains stories relating to illness experience, declines in mental health, racism, and medical gaslighting. The things said by characters (including doctors) relate to real experiences, but do not constitute medical advice. For advice on how to manage Long Covid, visit: www.longcovidkids.org. Scan the QR code on the back cover for a glossary of key terms.*

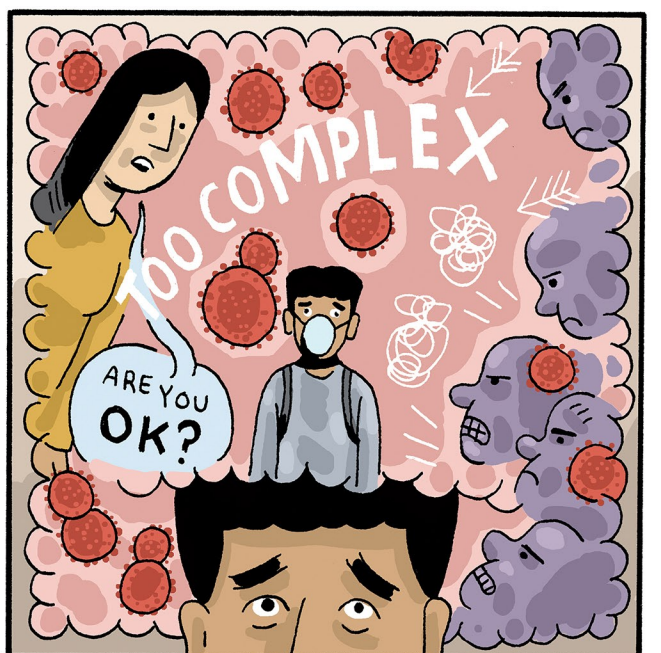


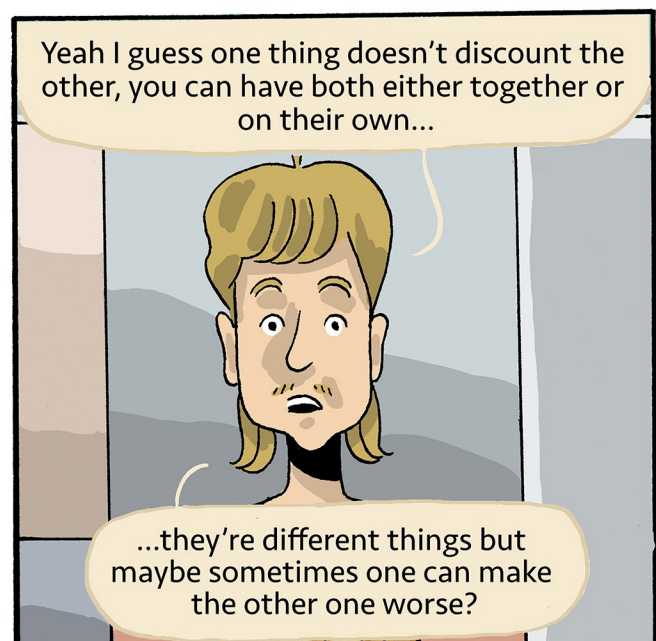
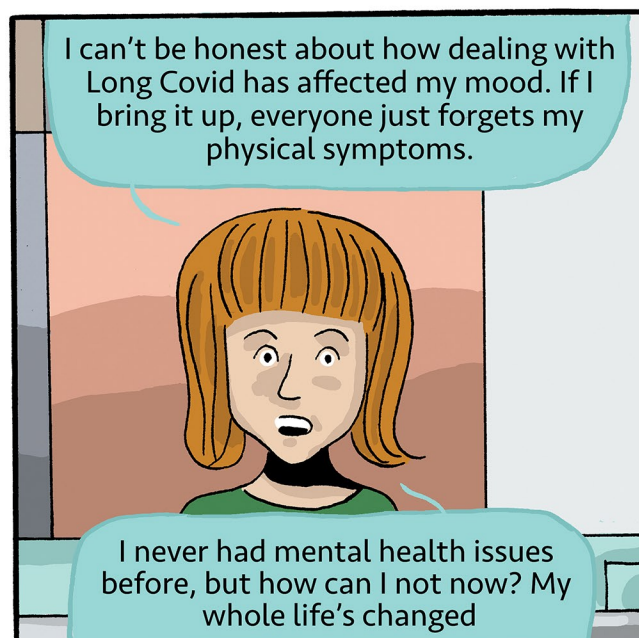
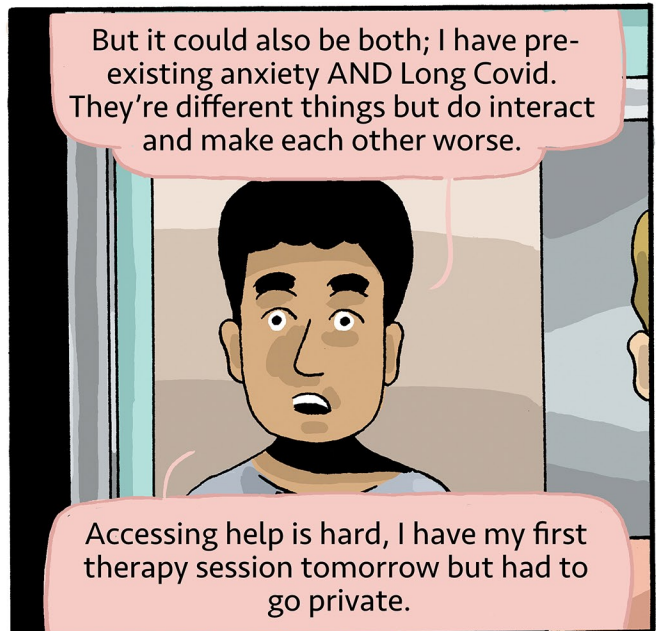
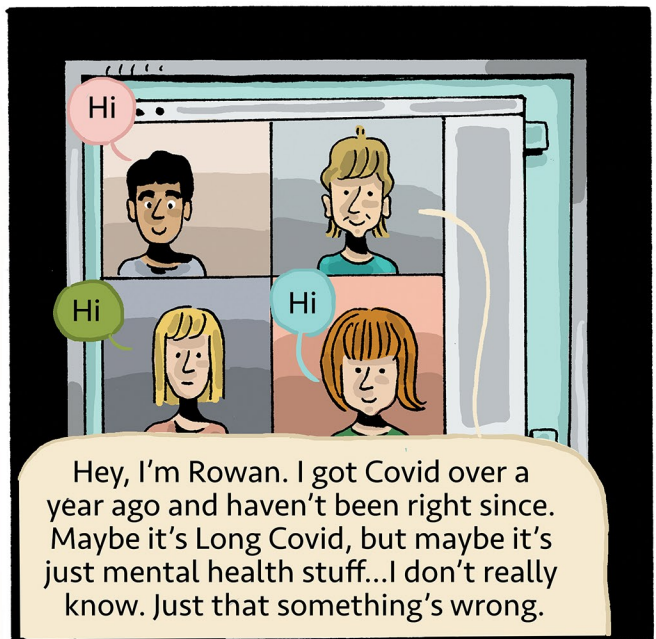
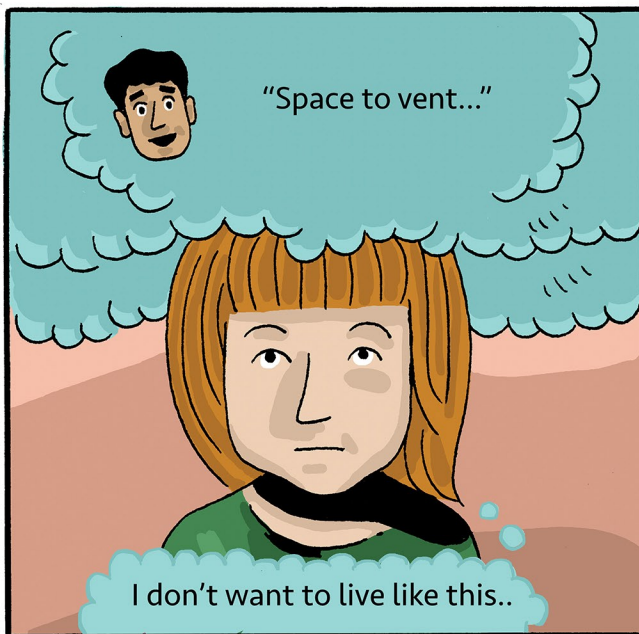


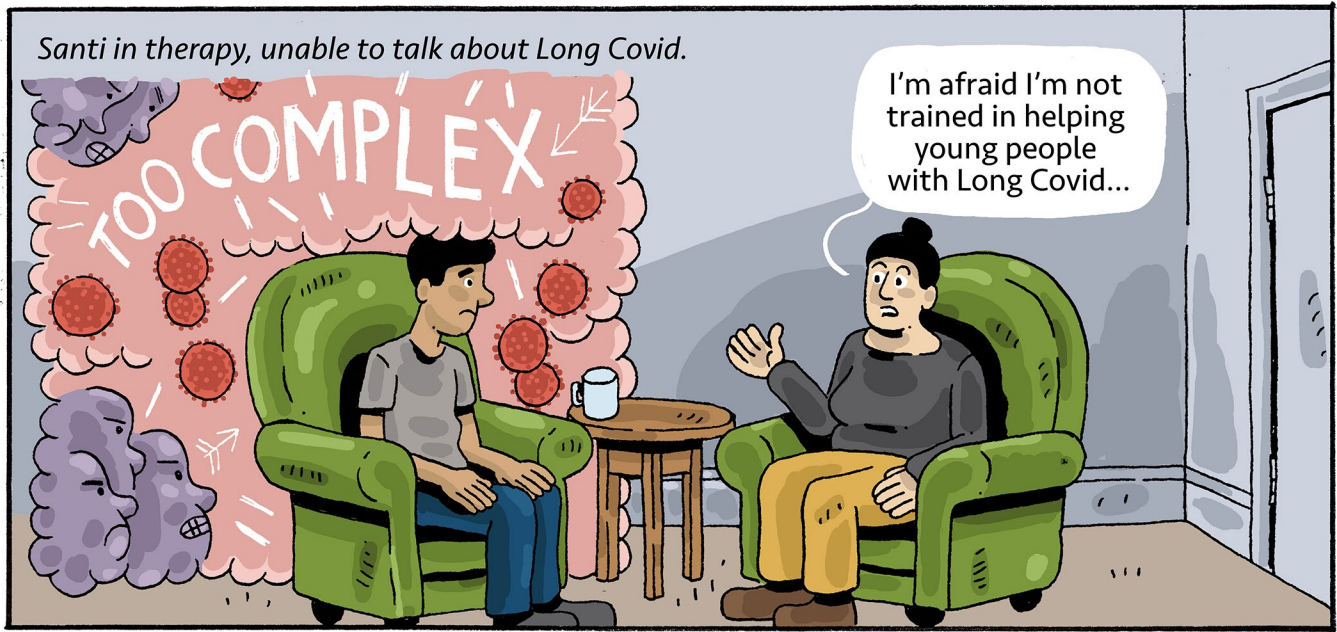




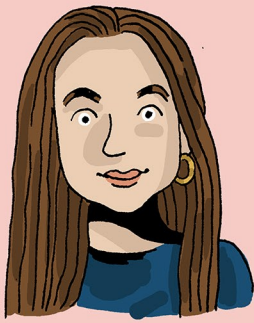








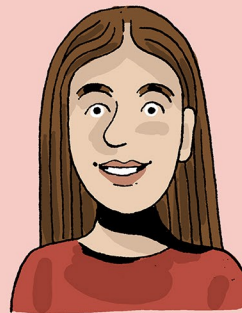
Long Covid Lives was made with:



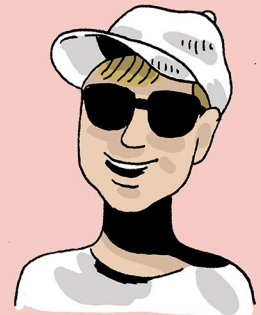
A. Haynes



Cal Bloodworth



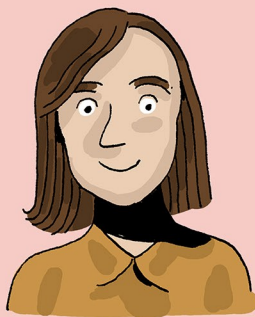
Eden Byrne



William George



Emily Miller



Hannah Cowan



Juliette Gunn-Roberts



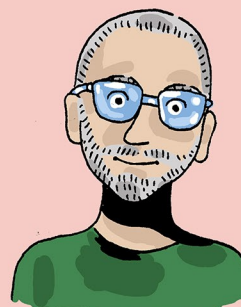
Zaira Clarke



Lucinda Leal



Praveena Fernes



Tim Rhodes



Daniel Locke



Benjamin Worku-Dix

Long Covid Lives

Credits

Produced from research by:

Covid Made Long Project, London School of Hygiene and Tropical Medicine



Illustration

Daniel Locke

Production

Dr Benjamin Worku-Dix

University Researchers and Scriptwriters

Hannah Cowan, Zaira Clarke, Tim Rhodes, Praveena K. Fernes

Peer Researchers and Scriptwriters

Alex, Eden Byrne, Lucinda Leal, Jenny, Cal Bloodworth, William George, Juliette Gunn-Roberts, A. Haines, Emily Miller

Special Thanks to

Sammie McFarland and Kirsty Stanley at Long Covid Kids.

Funded by

National Institute for Health and Care Research (NIHR)

FUNDED BY



In Partnership with

Long Covid Kids and Long Covid Support



Produced By



Stories Drawn from Research

www.positivenegatives.org

@PosNegOrg

Long Covid Lives is a three-part graphic series which explores the lived experiences of young people living with Long Covid. It is based on a research project where young people were interviewed about their experiences. Our research shows that young people living with Long Covid can struggle to access care and support as well as to have their voices heard.

Part One explores the difficulties young people experiencing a range of ongoing symptoms face in being believed and accessing care and support. Part Two explores the multiple, varying impacts of Long Covid and the pandemic on young people's lives, and how the care available is often fragmented, failing to see young people's illness experience as a whole. Part Three explores how, despite the challenges of chronic illness, young people adapt and remake their worlds in order to live with Long Covid.

Long Covid Lives has been illustrated by Daniel Locke and produced by PositiveNegatives from research undertaken by the Covid Made Long Project at the London School of Hygiene and Tropical Medicine in partnership with Imperial College London, Long Covid Kids, and Long Covid Support.

Visit: www.lshtm.ac.uk/research/centres-projects-groups/covid-made-long
Contact: Tim.Rhodes@lshtm.ac.uk

See our lived experience glossary: <https://www.lshtm.ac.uk/covid-made-long#resources>

